

# CLASS X MEYER GAGE MG-25 SERIES



## MG-25 PIN GAGE SETS

IN .0001" INCREMENTS OR .01mm INCREMENTS

Used as masters to calibrate measuring equipment and check linearity of comparators, micrometers, and calipers. These "Tenth Step" gage sets have unlimited applications, such as quality control inspection, prototype work and production layout. Inspectors select from the range of pins to find the size of a hole or slot. These round masters simulate a cylindrical part which unlike flat blocks can detect uneven wear on the tips of micrometers and calipers. The thin "line" of contact detects uneven face wear better than flat gage blocks with large contact area.

**SEE PAGE 67 FOR  
MORE CLASS X GAGE SETS**

### FEATURES:

- Each set contains 25 pieces of Class X tolerance (.00004") gage pins. Traceable to NIST.
- Choice of two tolerances Plus (+.00004") or Minus (-.00004").
- Sets consist of a center nominal size, and 12 gages larger in .0001" steps and 12 gages smaller in .0001" steps.
- Each gage is inspected and has a 2 micro-finish or better.
- Heat treated and through hardened to 60-62 Rockwell C.
- All pin gages over .060" or 1.51mm are laser marked with size direction of tolerance and serial number for traceability.

GAGE SET NO.	NOMINAL SIZE RANGE		SET PRICE
	<i>English</i>	<i>or Metric</i>	
MG1-25	.0110 to .0609	.28mm to 1.54mm	\$470.00
MG2-25	.0610 to .2509	1.55mm to 6.37mm	\$235.00
MG3-25	.2510 to .5009	6.38mm to 12.72mm	\$270.00
MG4-25	.5010 to .7499	12.73mm to 19.04mm	\$375.00
MG5-25	.7500 to .8129	19.05mm to 20.64mm	\$520.00

To order simply select your nominal size from any .0001" English or .01mm Metric increment and direction of tolerance. Then refer to the above chart to find the set price.

**WILLIAM T. HUTCHINSON CO.**

TOLL FREE 1-800-544-7934 • 453 LEHIGH AVENUE • UNION, NEW JERSEY 07083-7926

[www.hssblanks.com](http://www.hssblanks.com)

# PRECISION PLUG GAGE SETS


**METRIC GAGE SETS**

Gage Set Number	Gage Size	No. of Members	Price	Separate Member Price	Gage Set Number	Gage Size	No. of Members	Price	Separate Member Price
WTH-0	.011 - .060	50	120.00	5.50	WTH-0 mm	.22mm - 1.50mm	65	155.00	6.75
WTH-0-5	.0115 - .0605	50	130.00	5.50	WTH-01 mm	.23mm - 1.51mm	65	165.00	6.75
WTH-1	.061 - .250	190	270.00	5.00	WTH-1 mm	1.52mm - 7.70mm	310	550.00	6.25
WTH-1-5	.0615 - .2505	190	275.00	5.00	WTH-11 mm	1.53mm - 7.71mm	310	555.00	6.25
WTH-10	.011 - .250	240	370.00	—	WTH-2 mm	7.72mm - 12.70mm	250	590.00	6.25
WTH-105	.0115 - .2505	240	375.00	—	WTH-21 mm	7.73mm - 12.71mm	250	595.00	6.25
WTH-2	.251 - .500	250	400.00	5.00	WTH-3 mm	12.72mm - 15.30mm	130	655.00	7.75
WTH-2-5	.2515 - .5005	250	405.00	5.00	WTH-31 mm	12.73mm - 15.31mm	130	660.00	7.75
WTH-3	.501 - .625	125	470.00	6.75	WTH-4 mm	15.32mm - 17.80mm	125	695.00	12.00
WTH-3-5	.5015 - .6255	125	475.00	6.75	WTH-41 mm	15.33mm - 17.81mm	125	700.00	12.00
WTH-4	.626 - .750	125	520.00	9.75	WTH-5 mm	17.82mm - 20.36mm	128	825.00	14.50
WTH-4-5	.6265 - .7505	125	525.00	9.75	WTH-51 mm	17.83mm - 20.37mm	128	830.00	14.50
WTH-5	.751 - .832	82	880.00	14.75	WTH-6 mm	20.38mm - 22.04mm	84	985.00	17.00
WTH-5-5	.7515 - .8325	82	900.00	14.75	WTH-61 mm	20.39mm - 22.05mm	84	990.00	17.00
WTH-6	.833 - .916	84	1025.00	16.75	WTH-7 mm	22.06mm - 23.72mm	84	1135.00	19.00
WTH-6-5	.8335 - .9165	84	1030.00	16.75	WTH-71 mm	22.07mm - 22.73mm	84	1145.00	19.00
WTH-7	.917 - 1.000	84	1075.00	17.25	WTH-8 mm	23.74mm - 25.40mm	84	1170.00	21.50
WTH-7-5	.9175 - 1.0005	84	1080.00	17.25	WTH-81 mm	23.75mm - 25.41mm	84	1175.00	21.50

IN .02mm INCREMENTS

IN .001 INCREMENTS

**IMPORTANT: SPECIFY PLUS OR MINUS TOLERANCE WHEN ORDERING GAGES**
**PLASTIC CASES**

EACH HOLE SIZE MARKED ON INSERT.

Plastic insert for WTH-0 set .....	\$20.00 each
Plastic insert for WTH-1 thru WTH-8 sets .....	35.00 each
Plastic case for WTH-0 set .....	20.00 each
Plastic case for WTH-1 thru WTH-7 sets .....	40.00 each
Plastic case with insert for WTH-0 set .....	40.00 each
Plastic case with insert for WTH-1 thru WTH-7 sets .....	75.00 each

**USES**

- Checking locations.
- Measuring hole sizes and depths
- Go and No-Go gaging.
- Setting micrometers.
- Checking distances between holes.

**FEATURES**

- All Gages 2" long
- No sharp edges
- Boxes and Gages both marked (WTH-0 pins not etched)
- 8 Micro finish or better
- All english gages are inspected within .0001 tolerance limits
- All metric gages are inspected within .0025mm tolerance limits
- Heat treated to a hardness of Rockwell C 60-62
- Each set packaged in its own plastic case

**WILLIAM T. HUTCHINSON CO.**

TOLL FREE 1-800-544-7934 • (908) 688-0533 • FAX (908) 688-8296 • ESTABLISHED 1927

[www.hssblanks.com](http://www.hssblanks.com)

# PRECISION PLUG GAGE SETS



## CLASS X GAGE SETS .001 INCREMENTS

Gage Set	Range	Number of Members	Price	Separate Member Price
WTH-OX	.011" -.060"	50	650.00	31.00
WTH-O5X	.0115 -.0605	50	650.00	31.00
WTH-1X	.061 - .250	190	1710.00	26.00
WTH-15X	.0615 - .2505	190	1710.00	26.00
WTH-2X	.251 - .500	250	2260.00	21.50
WTH-25X	.2515 - .5005	250	2260.00	21.50
WTH-3X	.501 - .625	125	1920.00	23.50
WTH-35	.5015 - .6255	125	1920.00	23.50
WTH-4X	.626 - .750	125	2035.00	29.50
WTH-45	.6265 - .7505	125	2035.00	29.50
WTH-5X	.751 - .832	82	1710.00	32.50
WTH-55X	.7515 - .8325	82	1710.00	32.50
WTH-6X	.833 - .916	84	1800.00	32.50
WTH-65X	.8335 - .9165	84	1800.00	32.50
WTH-7X	.917 - 1.000	84	2065.00	32.50
WTH-75X	.9175 - 1.0005	84	2065.00	32.50

.000040 tolerance • Each set packaged in Plastic Case and Insert.

**GAGE SET LIBRARIES:** Conveniently store all your gages in one location  
**IMPORTANT! Specify plus or minus tolerance when ordering gages**

### .0001 (CLASS Z) LIBRARY SERIES

Model Number	Wt./lbs.	Range	Number of members	Price
L-S	87	.011" - .625"	(615 gages)	1490.00
L-C	120	.011" - .750"	(740 gages)	2155.00
L-1	120	.061" - .750"	(690 gages)	2060.00
L-2	95	.061" - .5005"	(880 gages in .0005" increments)	1750.00
L-2C	96	.011" - .5005"	(980 gages in .0005" increments)	1945.00
L-3*	240	.061" - 1.000"	(940 gages)	5245.00
L-4*	240	.011" - 1.000"	(990 gages)	5345.00
L-5	140	.751" - 1.000"	(250 gages)	3435.00

### .00004 (CLASS X) LIBRARY SERIES

Model Number	Wt./lbs.	Range	Number of members	Price
L-CX	120	.011" - .750"	(740 gages)	7820.00
L-1X	122	.061" - .750"	(690 gages)	7250.00
L-2X	98	.061" - .5005"	(880 gages in .0005 increments)	7125.00
L-2CX	100	.011" - .5005"	(980 gages in .0005" increments)	8150.00
L-3X*	260	.061" - 1.000"	(940 gages)	12245.00
L-4X*	250	.011" - 1.000"	(990 gages)	12730.00

\* Consists of one seven drawer cabinet.

### METRIC LIBRARY SERIES (.0025mm)

Model Number	Wt./lbs.	Range	Number of members	Price
L-10 mm	124	1.52mm - 17.80mm	(815 gages)	2645.00
L-11 mm	124	1.53mm - 17.81mm	(815 gages)	2645.00
L-20 mm	183	17.82mm - 25.40mm	(380 gages)	4180.00
L-21 mm	183	17.83mm - 25.41mm	(380 gages)	4180.00
L-30 mm**	305	1.52mm - 25.40mm	(1195 gages)	6820.00
L-31 mm**	305	1.53mm - 25.41mm	(1195 gages)	6820.00

\*\*Consists of 2 four drawer cabinets

### Upgrade Existing Sets

L-E 4	38	four drawer cabinet empty	450.00
L-IN 4	46	four drawer cabinet with four inserts of your choice	545.00

**WILLIAM T. HUTCHINSON CO.**

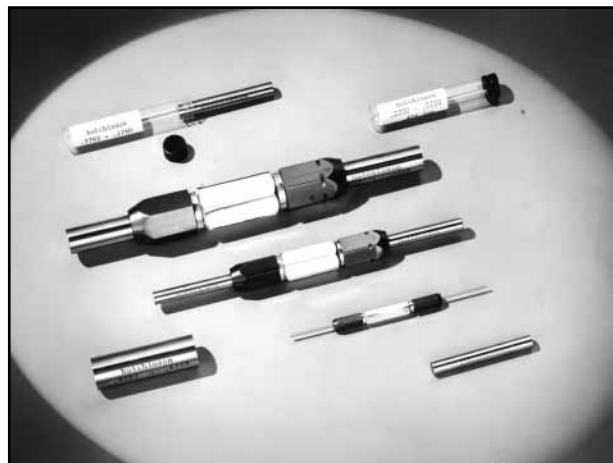
TOLL FREE 1-800-544-7934 • 453 LEHIGH AVENUE • UNION, NEW JERSEY 07083-7926

[www.hssblanks.com](http://www.hssblanks.com)

# REVERSIBLE PLUG GAGES

Hutchinson HSS gages are an ideal low cost solution to a variety of dimensioning problems.

All gage members are made of M2 high speed steel hardness "C" 62-64.



**YOUR CHOICE OF THREE TOLERANCES**

+ .0002	+ .0000	+ .0001
- .0000	- .0002	- .0001

## 2" LONG HSS GAGE MEMBER PRICES

<p>.0030-.0049 ..... 20.00 .076 MM - .126 MM</p> <p>.0050-.0069 ..... 19.00 .127 MM - .176 MM</p> <p>.0070-.0099 ..... 16.00 .177 MM - .253 MM</p> <p>.0100-.0200 ..... 6.00 .254 MM - .508 MM</p> <p>.0201-.0312 ..... 4.78 .511 MM - .793 MM</p> <p>.0313-.0938 ..... 4.15 .795 MM - 2.383 MM</p> <p>.0939 - .1250 ..... 4.39 2.385MM - 3.175 MM</p> <p>.1251 - .1875 ..... 5.66 3.178 MM - 4.763 MM</p> <p>.1876 - .2500 ..... 6.17 4.765 MM - 6.350 MM</p>	<p>.2501-.3125 ..... 6.73 6.353 MM - 7.938 MM</p> <p>.3126 - .3750 ..... 7.10 7.940 MM - 9.525 MM</p> <p>.3751-.5000 ..... 7.99 9.528. MM - 12.700 MM</p> <p>.5001 - .5625 ..... 9.89 12.703 - 14.288 MM</p> <p>.5626 - .6250 ..... 10.69 14.290 MM - 15.875 MM</p> <p>.6251 - .6875 ..... 11.99 15.878 MM - 17.463 MM</p> <p>.6876 - .7500 ..... 13.00 17.465 MM - 19.050 MM</p> <p>.7501 - .8125 ..... 14.57 19.053 MM - 20.638 MM</p> <p>.8126 - .8750 ..... 15.87 20.640 MM - 22.225 MM</p>	<p>.8751 - .9375 ..... 18.64 22.228 MM - 23.813 MM</p> <p>.9376-1.0000 ..... 20.35 23.815 MM - 25.400 MM</p> <p>1.0001-1.0625 ..... 25.13 25.403 MM - 26.988 MM</p> <p>1.0626-1.1250. .... 28.00 26.990 MM - 30.163 MM</p> <p>1.1251 - 1.2500 ..... 33.30 30.165 MM - 31.750 MM</p> <p>1.2501 - 1.3125 ..... 35.51 31.753 MM - 33.338 MM</p> <p>1.3126 - 1.3750 ..... 38.85 33.340 MM - 34.925 MM</p> <p>1.3751 - 1.4375 ..... 43.36 34.928 MM - 36.513 MM</p> <p>1.4376 - 1.5000 ..... 47.70 36.515 MM - 38.100 MM</p>
--	---	---

### Standard Plug Gage Classes For Product Tolerances

Normal practice for product gage tolerance is to allow 10% of the product to be equally divided between "go" and "no-go". In the case of plug gages, "go" is normally a plus tolerance and "no-go" is normally a minus tolerance.

### Standard Gagemakers' Tolerance Chart

Size Range	CLASS XXXX	CLASS XXX	CLASS XX	CLASS X	CLASS Y	CLASS Z
Above						
.0009 - .010	.000005	.00001	.00002	.00004	.00007	.00010
.010 - .029	.000005	.00001	.00002	.00004	.00007	.00010
.029 - .825	.000005	.00001	.00002	.00004	.00007	.00010
.825 - 1.510	.000008	.000015	.00003	.00006	.00009	.00012
1.510 - 2.510	.00001	.00002	.00004	.00008	.00012	.00016
2.510 - 4.510	.000013	.000025	.00005	.00010	.00015	.00020
4.510 - 6.510	.000017	.000033	.000065	.00013	.00019	.00025
6.510 - 9.010	.00002	.00004	.00008	.00016	.00024	.00032
9.010 - 12.260	.000025	.00005	.00010	.00020	.00030	.00040

PLEASE USE THIS CHART FOR GAGES  
ON THE FOLLOWING PAGES

### Single or Double End Handles for above gages

Handle Number	Size Range	Price Each
<b>1W</b>	.000 - .075	<b>11.75</b>
<b>2W</b>	.075 - .180	<b>10.50</b>
<b>3W</b>	.180 - .281	<b>11.75</b>
<b>4W</b>	.281 - .406	<b>14.50</b>
<b>5W</b>	.406 - .510	<b>17.00</b>
<b>6W</b>	.510 - .635	<b>21.75</b>
<b>7W</b>	.635 - .760	<b>24.50</b>
<b>8W</b>	.760 - 1.010	<b>34.75</b>

All handles supplied complete with bushings.

## WILLIAM T. HUTCHINSON CO.

TOLL FREE 1-800-544-7934 • (908) 688-0533 • FAX (908) 688-8296 • ESTABLISHED 1927

# TRILOCKS - STEEL AND CHROME

SIZE RANGE Above - Through	CLASS	STD GO MEMBER ONLY			STD NO GO MEMBER ONLY			HANDLE	
		Length	Steel	Chrome	Length	Steel	Chrome	No.	Price
<b>.760 IN - .947 IN</b> 19.30 MM - 24.05 MM	XX		121.50	214.44	3/4 in.	117.50	194.06	2 1/2	23.50
	X	1 1/4 IN	90.80	181.60	19.1MM	86.50	166.98		
	Y	31.8 MM	81.00	155.80		77.00	143.34		
	Z		64.80	129.60		60.96	121.92		
<b>.947 IN - 1.135 IN</b> 24.05 MM - 28.83 MM	XX		124.25	217.70	3/4 in.	117.50	196.20	3 1/2	25.00
	X	1 3/8 IN	93.26	186.52	19.1 MM	89.25	170.62		
	Y	34.9 MM	83.75	160.10		81.00	146.54		
	Z		69.09	138.18		64.80	129.60		
<b>1.135 IN - 1.510 IN</b> 28.83 MM - 38.35 MM	XX		127.00	233.78	3/4 IN.	121.50	209.72	4 1/2	26.50
	X	1 1/2 IN.	101.97	203.94	19.1 MM	94.50	186.08		
	Y	38.1 MM	87.75	169.12		83.75	154.28		
	Z		74.25	143.34		66.51	133.02		
<b>1.510 IN - 2.010 IN</b> 38.35 MM - 51.05 MM	XX		183.75	345.76		174.25	313.30	5 1/2	29.75
	X	1 7/8 IN	146.12	292.24	7/8 IN	139.25	254.84		
	Y	47.8 MM	131.29	262.58	22.2 MM	116.25	228.98		
	Z		112.25	214.02		101.25	200.26		
<b>2.010 IN - 2.510 IN</b> 51.05 MM - 63.75 MM	XX		207.57	415.14		193.25	377.76	6	33.75
	X	2 IN	172.88	345.76	7/8 IN	156.65	313.30		
	Y	50.8 MM	152.99	305.98	22.2 MM	136.50	267.54		
	Z		133.75	257.22		124.25	227.78		
<b>2.510 IN - 3.010 IN</b> 63.75 MM - 76.45 MM	XX		248.50	471.10		229.50	414.10	7	37.25
	X	2 IN	200.81	401.62	1 IN	170.25	335.88		
	Y	50.8 MM	172.88	345.76	25.4MM	150.53	301.06		
	Z		143.23	286.46		129.69	259.38		
<b>3.010 IN - 3.510 IN</b> 76.45 MM - 89.15 MM	XX		358.75	575.24		313.25	495.94	7	37.25
	X	2 IN	295.75	439.88	1 IN	260.75	409.36		
	Y	50.8 MM	240.50	410.66	25.4 MM	206.75	358.42		
	Z		213.50	351.98		179.75	308.56		
<b>3.510 IN - 4.010 IN</b> 89.15 MM - 101.85 MM	XX							7	37.25
	X	2 1/8 IN			1 IN				
	Y	54.0 MM			25.4 MM				
	Z								
<b>4.010 IN - 4.510 IN</b> 101.85 MM - 114.55 MM	XX							7	37.25
	X	2 1/8 IN			1 IN				
	Y	50.8 MM			25.4 MM				
	Z								
<b>4.510 IN - 5.010 IN</b> 114.55MM - 127.25 MM	XX							7	37.25
	X	2 1/8 IN			1 IN				
	Y	54.0 MM			25.4 MM				
	Z								
<b>5.010 IN - 5.510 IN</b> 127.25 MM - 139.95 MM	XX							7	37.25
	X	2 1/8 IN			1 IN				
	Y	54.0 MM			25.4 MM				
	Z								
<b>5.510 IN - 6.010 IN</b> 139.95 MM - 152.65 MM	XX							7	37.25
	X	2 1/8 IN			1 IN				
	Y	54.0 MM			25.4 MM				
	Z								
<b>6.010 IN - 6.510 IN</b> 152.65 MM - 165.35 MM	XX							7	37.25
	X	2 1/8 IN			1 IN				
	Y	54.0 MM			25.4 MM				
	Z								
<b>6.510 IN - 7.010 IN</b> 165.35MM - 178.05MM	XX							7	37.25
	X	2 1/8 IN			1 IN				
	Y	54.0 MM			25.4 MM				
	Z								

Prices  
on  
Application

Prices  
on  
Application

Additional sizes available through 8.010 in.

See page 74 for Progressive Trilocks

**Trilocks are also available in Carbide.**  
**Call for pricing and delivery**



**WILLIAM T. HUTCHINSON CO.**

TOLL FREE 1-800-544-7934 • 453 LEHIGH AVENUE • UNION, NEW JERSEY 07083-7926

[www.hssblanks.com](http://www.hssblanks.com)

# REVERSIBLE PLUG GAGES

Size / Range		Class	Tolerance in inches	Member Length	Reversible Go or No Go		AGD Handle single or double end	
Above	To and Including				Steel	Carbide	No.	Price
<b>.011 IN - .020 IN</b> .279 MM - .508 MM		XX	.00002	2 IN 50.8 MM	67.25	—	1 W	11.75
		X	.00004		39.00	—		
		Y	.00007		33.00	—		
		Z	.00010		32.00	—		
<b>.020 IN - .030 IN</b> .508 MM - .762 MM		XX	.00002	2 IN 50.8 MM	67.25	—	1 W	11.75
		X	.00004		36.00	—		
		Y	.00007		33.00	—		
		Z	.00010		29.00	—		
<b>.030 IN - .040 IN</b> .762 MM - 1.02 MM		XX	.00002	2 IN 50.8 MM	67.25	—	1 W	11.75
		X	.00004		31.00	—		
		Y	.00007		31.00	—		
		Z	.00010		21.00	—		
<b>.040 IN - .075 IN</b> 1.02 MM - 1.91 MM		XX	.00002	2 IN 50.8 MM	67.25	127.00	1 W	11.75
		X	.00004		31.00	121.00		
		Y	.00007		31.00	115.00		
		Z	.00010		21.00	108.00		
<b>.075 IN - .116 IN</b> 1.91 MM - 2.92 MM		XX	.00002	2 IN 50.8 MM	59.00	127.00	2 W	10.75
		X	.00004		26.00	121.00		
		Y	.00007		26.00	115.00		
		Z	.00010		20.00	108.00		
<b>.116 IN - .130 IN</b> 2.92 MM - 3.30 MM		XX	.00002	2 IN 50.8 MM	59.00	77.00	2 W	10.75
		X	.00004		26.00	71.00		
		Y	.00007		26.00	65.00		
		Z	.00010		17.00	63.00		
<b>.130 IN - .180 IN</b> 3.30 MM - 4.57 MM		XX	.00002	2 IN 50.8 MM	59.00	79.00	2 W	10.75
		X	.00004		26.00	76.00		
		Y	.00007		26.00	70.00		
		Z	.00010		17.00	65.00		
<b>.180 IN - .230 IN</b> 4.57 MM - 5.84 MM		XX	.00002	2 IN 50.8 MM	55.75	83.00	3 W	11.75
		X	.00004		22.00	79.00		
		Y	.00007		21.00	76.00		
		Z	.00010		18.00	70.00		
<b>.230 IN - .281 IN</b> 5.84 MM - 7.14 MM		XX	.00002	2 IN 50.8 MM	55.75	96.00	3 W	11.75
		X	.00004		22.00	88.00		
		Y	.00007		21.00	80.00		
		Z	.00010		18.00	81.00		
<b>.281 IN - .344 IN</b> 7.14 MM - 8.74 MM		XX	.00002	2 IN 50.8 MM	56.75	98.00	4 W	14.50
		X	.00004		26.00	91.00		
		Y	.00007		23.00	85.00		
		Z	.00010		18.00	82.00		
<b>.344 IN - .406 IN</b> 8.74 MM - 10.31 MM		XX	.00002	2 IN 50.8 MM	56.75	106.00	4 W	14.50
		X	.00004		26.00	102.00		
		Y	.00007		23.00	99.00		
		Z	.00010		18.00	97.00		
<b>.406 IN - .460 IN</b> 10.31 MM - 11.68 MM		XX	.00002	2 IN 50.8 MM	61.00	113.00	5 W	18.50
		X	.00004		27.00	108.00		
		Y	.00007		24.00	105.00		
		Z	.00010		20.00	100.00		
<b>.460 IN - .510 IN</b> 11.68 MM - 12.95 MM		XX	.00002	2 IN 50.8 MM	61.00	120.00	5 W	18.50
		X	.00004		27.00	113.00		
		Y	.00007		26.00	108.00		
		Z	.00010		24.00	105.00		

## WILLIAM T. HUTCHINSON CO.

TOLL FREE 1-800-544-7934 • (908) 688-0533 • FAX (908) 688-8296 • ESTABLISHED 1927

[www.hssblanks.com](http://www.hssblanks.com)

# REVERSIBLE PLUG GAGES

Size / Range		Class	Tolerance in inches	Member Length	Reversible Go or No Go		AGD Handle single or double end	
Above	To and Including				Steel	Carbide	No.	Price
<b>.510 IN - .560 IN</b> 12.95 MM - 14.22 MM		XX X Y Z	.00002 .00004 .00007 .00010	2 IN 50.8 MM	63.00 29.00 26.00 24.00	167.00 162.00 156.00 149.00	6 W	23.50
<b>.560 IN - .635 IN</b> 14.22 MM - 16.13 MM		XX X Y Z	.00002 .00004 .00007 .00010	2 IN 50.8 MM	63.00 29.00 26.00 24.00	200.00 190.00 185.00 178.00	6 W	23.50
<b>.635 IN - .700 IN</b> 16.13 MM - 17.78 MM		XX X Y Z	.00002 .00004 .00007 .00010	2 IN 50.8 MM	67.25 32.00 29.50 24.00	215.00 206.00 199.00 188.00	7 W	26.50
<b>.700 IN - .760 IN</b> 17.78 MM - 19.30 MM		XX X Y Z	.00002 .00004 .00007 .00010	2 IN 50.8 MM	67.25 32.00 30.00 29.00	265.00 255.00 244.00 235.00	7 W	26.50
<b>.760 IN - .825 IN</b> 19.30 MM - 20.95 MM		XX X Y Z	.00002 .00004 .00007 .00010	2 IN 50.8 MM	102.00 32.50 32.50 29.00	— — — —	8 W	40.25
<b>.825 IN - 1.000 IN</b> 20.95 MM - 25.40 MM		XX X Y Z	.00003 .00006 .00009 .00012	2 IN 50.8 MM	102.00 47.00 42.00 38.00	— — — —	8 W	40.25

- Go gages supplied with plus tolerance
- No go gages supplied with minus tolerance
- Bi-lateral (Split) tolerances also available at above listed prices
- Extra long gages in steel and chrome are available up to 6 in (152.4mm) for diameters above .075
- Quantity discounts available - Call for quotation
- Certification of calibration available for additional charge
- All handles supplied complete with bushings
- For larger gauges - see trilocks on page 69.
- For class "X" gauges up to 6" long - see page 74.



**WILLIAM T. HUTCHINSON CO.**

TOLL FREE 1-800-544-7934 • 453 LEHIGH AVENUE • UNION, NEW JERSEY 07083-7926

[www.hssblanks.com](http://www.hssblanks.com)

## RING GAGES

Size / Range Above To and Including	Class	Tolerance in inches	Standard A.G.D Blank size		Price Each		
			Length	O.D.	Steel	Chrome	Carbide
<b>.015 IN - .040 IN</b> 0.381 MM - 1.02 MM	XX	.00002	BLANK #000		PRICES ON APPLICATION	—	—
	X	.00004	$\frac{3}{32}$ IN	$\frac{15}{16}$ IN		—	—
	Y	.00007	2.37 MM	23.8 MM		—	—
	Z	.00010				—	—
<b>.040 IN - .070 IN</b> 1.02 MM - 2.54 MM	XX	.00002	BLANK #00		254.87	—	407.22
	X	.00004	$\frac{3}{16}$ IN	$\frac{15}{16}$ IN	229.39	—	366.51
	Y	.00007	4.8 MM	23.8 MM	205.00	—	325.79
	Z	.00010			203.90	—	325.79
<b>.0701 IN - .1500 IN</b> 2.54 MM - 3.81 MM	XX	.00002	BLANK #00		221.64	—	370.21
	X	.00004	$\frac{3}{16}$ IN	$\frac{15}{16}$ IN	175.00	—	333.19
	Y	.00007	4.8 MM	23.8 MM	177.31	—	296.16
	Z	.00010			177.31	—	296.16
<b>.150 IN - .185 IN</b> 3.81 MM - 4.70 MM	XX	.00002	BLANK #00		192.73	269.82	336.56
	X	.00004	$\frac{3}{16}$ IN	$\frac{15}{16}$ IN	173.46	242.84	302.90
	Y	.00007	4.8 MM	23.8 MM	154.18	215.86	269.24
	Z	.00010			154.18	215.86	269.24
<b>.185 IN - .230 IN</b> 4.70 MM - 5.84 MM	XX	.00002	BLANK #0		183.55	256.97	326.75
	X	.00004	$\frac{3}{8}$ IN	$\frac{15}{16}$ IN	165.20	231.27	294.08
	Y	.00007	9.5 MM	23.8 MM	146.83	205.58	261.41
	Z	.00010			146.83	205.58	261.41
<b>.230 IN - .365 IN</b> 5.84 MM - 9.27 MM	XX	.00002	BLANK #1		174.80	244.73	317.24
	X	.00004	$\frac{5}{16}$ IN	1 IN	157.33	220.26	285.51
	Y	.00007	14.3 MM	28.6 MM	139.85	195.78	253.79
	Z	.00010			139.85	195.78	253.79
<b>.365 IN - .510 IN</b> 9.27 MM - 12.95 MM	XX	.00002	BLANK #2		166.48	233.08	307.99
	X	.00004	$\frac{3}{4}$ IN	1 $\frac{3}{8}$ IN	149.84	209.78	277.20
	Y	.00007	19.1 MM	34.9 MM	133.19	186.46	246.40
	Z	.00010			133.19	186.46	246.40
<b>.510 IN - .825 IN</b> 12.95 MM - 20.95 MM	XX	.00002	BLANK #3		174.80	244.73	400.39
	X	.00004	$\frac{15}{16}$ IN	1 $\frac{1}{4}$ IN	157.33	220.26	360.36
	Y	.00007	23.8 MM	44.4MM	139.85	195.78	320.32
	Z	.00010			139.85	195.78	320.32
<b>.825 IN - 1.135 IN</b> 20.95 MM - 28.83 MM	XX	.00003	BLANK #4		183.55	256.97	520.51
	X	.00006	1 $\frac{1}{8}$ IN	2 $\frac{1}{8}$ IN	165.20	231.27	468.46
	Y	.00009	28.6 MM	54.0 MM	146.83	205.58	416.40
	Z	.00012			146.83	205.58	416.40

- Choice of three tolerances: Go - Unilateral minus  
No Go - Unilateral plus  
Master - Bilateral (split)
- Carbide rings have tungsten carbide inserts and steel jackets
- All ring gages are lapped to size and polished
- Roundness and taper of all gages will not exceed 50% of the applicable gagemakers size tolerance and are non-accumulative.

Also Available: Aluminum Ring Gage Holders — SEE PAGE 73



**WILLIAM T. HUTCHINSON CO.**

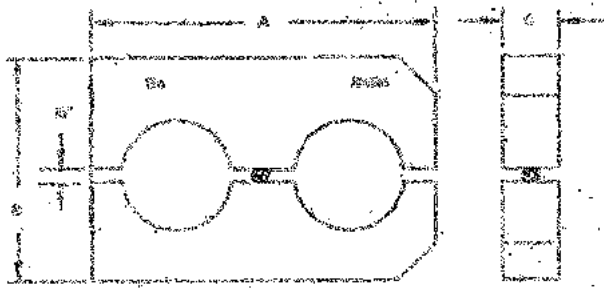
TOLL FREE 1-800-544-7934 • (908) 688-0533 • FAX (908) 688-8296 • ESTABLISHED 1927



## RING GAGES

Size / Range Above To and Including	Class	Tolerance in inches	Standard A.G.D Blank size		Price Each		
			Length	O.D.	Steel	Chrome	Carbide
<b>1.135 IN - 1.510 IN</b> 28.83 MM - 38.35 MM	XX	.00004	BLANK # 5		229.44	295.52	702.69
	X	.00006	1 1/16 IN	2 1/2 IN	206.49	265.97	632.42
	Y	.00009	33.3MM	63.5 MM	183.55	236.41	562.16
	Z	.00012			183.55	236.41	562.16
<b>1.510 IN - 2.010 IN</b> 38.35 MM - 51.05 MM	XX	.00004	BLANK #6		263.85	340.00	948.63
	X	.00008	1 1/2 IN	4 IN	237.46	305.86	853.77
	Y	.00012	38.1 MM	101.6MM	211.08	275.00	758.90
	Z	.00016			211.08	271.87	758.90
<b>2.010 IN - 2.510 IN</b> 51.05 MM - 63.75 MM	XX	.00004	BLANK #7		311.34	435.00	1233.22
	X	.00008	1 1/2 IN	4 1/2 IN	280.21	385.00	1109.90
	Y	.00012	38.1 MM	101.6 MM	249.07	339.85	986.57
	Z	.00016			249.07	339.85	986.57
<b>2.510 IN - 3.010 IN</b> 63.75 MM - 76.45 MM	XX	.00005	BLANK #8		367.39	530.99	1541.52
	X	.00010	1 1/2 IN	5 IN	330.65	477.91	1387.37
	Y	.00015	38.1 MM	127.0 MM	293.90	424.80	1233.22
	Z	.00020			293.90	424.80	1233.22
<b>3.010 IN - 3.510 IN</b> 76.45 MM - 89.15 MM	XX	.00005	#9		433.52	610.65	1926.90
	X	.00010	1 1/2 IN	5 1/2 IN	390.16	549.58	1734.22
	Y	.00015	38.1 MM	139.7 MM	346.82	488.51	1541.52
	Z	.00020			346.82	488.51	1541.52
<b>3.510 IN - 4.010 IN</b> 89.15 MM - 101.85 MM	XX	.00005	#10		511.55	702.21	2408.63
	X	.00010	1 1/2 IN	6 3/8 IN	460.39	632.03	2167.78
	Y	.00015	38.1 MM	161.9 MM	409.24	561.80	1926.90
	Z	.00020			409.24	561.80	1926.90

## Ring Gage Holders



## Black Anodized Aluminum

FOR RING BLANK NO.	A	B	C	PRICE EACH
000	2-7/8	1-3/4	3/16	67.86
00	2-7/8	1-3/4	3/16	67.86
0	2-7/8	1-3/4	3/8	67.86
1	3-1/2	2-1/4	9/16	67.86
2	4-1/4	2-1/2	3/4	67.86
3	5	2-7/8	15/16	87.86
4	5-3/4	3-1/4	1-1/8	87.86
5	6-1/2	3-5/8	1-15/16	87.86

\*\*\* Pricing good until stock is depleted \*\*\*

Chrome ring gages available in sizes up to 12.260 in (311.40 mm)

Steel ring gages available in sizes up to 16.010 in (406.65 mm)

Call for pricing and delivery

Quantity discounts available on all ring gages

**WILLIAM T. HUTCHINSON CO.**

TOLL FREE 1-800-544-7934 • 453 LEHIGH AVENUE • UNION, NEW JERSEY 07083-7926

[www.hssblanks.com](http://www.hssblanks.com)

## EXTRA LENGTH CLASS "X" GAGES

Reversible pin gages in English and Metric up to 6" lengths. Ideal for deep and hard to reach holes or slots.

- Centerless lapped to a 5 microfinish
- Up to 6" long
- NIST Traceable
- Stabilized and heat treated to 60-62 RC
- Plus, Minus or Bilateral tolerance

Inch Size	Millimeter Size	3" Price	4" Price	5" Price	6" Price
.0110 IN - .0300 IN	.279 MM - .762 MM	165.00	225.00	475.00	550.00
.0301 IN - .0750 IN	.763 MM - 1.905 MM	100.00	125.00	200.00	385.00
.0751 IN - .1800 IN	1.906 MM - 4.572 MM	100.00	125.00	165.00	195.00
.1801 IN - .2810 IN	4.573 MM - 7.137 MM	100.00	125.00	165.00	195.00
.2811 IN - .4060 IN	7.138 MM - 10.312 MM	100.00	125.00	165.00	195.00
.4061 IN - .5100 IN	10.313 MM - 12.954 MM	110.00	135.00	180.00	210.00
.5101 IN - .6350 IN	12.955 MM - 16.129 MM	110.00	135.00	185.00	225.00
.6351 IN - .7600 IN	16.130 MM - 19.304 MM	110.00	135.00	185.00	225.00
.7601 IN - 1.0100 IN	19.305 MM - 25.654 MM	150.00	175.00	250.00	325.00

No guarantee of straightness, due to Centerless Grinding process on these products

## PROGRESSIVE TRILOCK GAGES

When you need to check parts quickly, Progressive plug gages are the best choice. Both the GO and NOGO diameters are stepped on a single gage member. All members are securely attached to a Trilock handle. All handles are marked with sizes and direction of tolerance.

- Class XX, X, Y, Z
- NIST traceable
- GO, NOGO tolerances
- Tool Steel 60/62 Rockwell C

Size / Range	Class	Tolerance Inches	Member Length	GO Portion	NOGO Portion	Steel	Chrome	Handle	
								#	Price
<b>1.5101 IN - 2.010 IN</b> 38.35 MM - 51.05 MM	XX X Y Z	.00004 .00008 .00012 .00016	2 7/8 IN 73.0 MM	1 7/8 IN 47.6 MM	7/8 IN 22.2 MM			5 1/2	
<b>2.0101 IN - 2.510 IN</b> 51.05 MM - 63.75 MM	XX X Y Z	.00004 .00008 .00012 .00016	3 IN 76.2 MM	2 IN 50.8 MM	7/8 IN 22.2 MM			6	
<b>2.5101 IN - 3.010 IN</b> 63.75 MM - 76.45 MM	XX X Y Z	.00005 .00010 .00015 .00020	3 IN 76.2 MM	2 IN 50.8 MM	7/8 IN 22.2 MM	Call for Pricing	Call for Pricing	7	Call for Pricing
<b>3.0101 IN - 3.510 IN</b> 76.45 MM - 89.15 MM	XX X Y Z	.00005 .00010 .00015 .00020	3 IN 76.2 MM	2 IN 50.8 MM	7/8 IN 22.2 MM	Call for Pricing	Call for Pricing	7	Call for Pricing
<b>3.5101 IN - 4.010 IN</b> 89.15 MM - 101.85 MM	XX X Y Z	.00005 .00010 .00015 .00020	3 1/8 IN 79.4 MM	2 1/8 IN 54.0 MM	7/8 IN 22.2 MM			7	
<b>4.0101 IN - 4.510 IN</b> 101.85 MM - 114.55 MM	XX X Y Z	.00005 .00010 .00015 .00020	3 1/8 IN 79.4 MM	2 1/8 IN 54.0 MM	7/8 IN 22.2 MM			7	

## WILLIAM T. HUTCHINSON CO.

TOLL FREE 1-800-544-7934 • (908) 688-0533 • FAX (908) 688-8296 • ESTABLISHED 1927

## STANDARD PRODUCTS AVAILABLE IN THE FOLLOWING MATERIALS —

### Hardened Round Blanks

M2	R/C 62-64
M42	R/C 66-68
ASP30	R/C 65-67
T15PM	R/C 64-66
M4PM	R/C 63-65
ASP60	R/C 67-69
ASP23	R/C 63-65
CPM10V	R/C 62-64
WKE45	R/C 67-69
O1	R/C 60-62
A2	R/C 58-60

### Hardened Round Blanks cont.

S7	R/C 58-60
D2	R/C 60-62
AISI 440C	R/C 58-60

### Case Hardened Rounds

AISI C-1060	R/C 60-65
AISI 440C	R/C 50-55
AISI 52100	R/C 58-63

### Annealed Rounds

M2	A2
----	----

### Annealed Rounds cont.

S7	O1
D2	

### Hardened Squares & Flats

M2	R/C 64.5-66
M3	R/C 65-66.5
M42	R/C 67-69
T15	R/C 65-67
T15 PM	R/C 65-67
M34	R/C 65-67
WKE45	R/C 67-69

<b>DRILL BLANKS</b>				
Carbide Blanks .....	15	End Mills.....	23	
Drill Blank Sets .....	9	Rotary Files .....	26	
Drill Rod .....	10, 11	<b>LINEAR MOTION COMPONENTS</b>		
Engraving Blanks (Carbide) .....	14	Pillow Blocks .....	31	
HSS Blanks .....	2-9	Shafting .....	32-34	
Stainless Steel Blanks.....	18	Supports.....	31, 34	
Super HSS Blanks .....	12, 13	<b>MOLD &amp; DIE SUPPLIES</b>		
Tool Steel Blanks .....	16, 17	Core Pins .....	39	
<b>CUTTING TOOLS</b>			Ejector Pins .....	36, 37
Cap Screw Counterbores .....	30	Ejector Sleeves .....	35	
Chucking Reamers .....	27-29	Punches .....	38, 40	
Comb. Drill & Countersinks .....	24	<b>SHOP TOOLS &amp; SUPPLIES</b>		
Countersinks .....	25, 26	Carbide Blanks-1000 & 2000 .....	44	
Drill Sets .....	9	Carbide Blanks-STB & STBL .....	45	
Drills - Extension .....	22	Carbide Bushings.....	59, 60	
Drills - Jobber.....	19-21	Cutoff Wheels.....	47, 48	
		Diamond Tools .....	47, 48	
		Dovetail Tool Blanks .....	46	
		Dowel Pins .....	49, 50	
		Feeler Gauge Stock .....	61, 62	
		Ground Flat Stock .....	57, 58	
		Hammers & Mallets .....	53, 54	
		Indexable Inserts.....	46	
		Screws .....	51, 52	
		Shim Stock .....	55, 56	
		Toolbits .....	41-43	
		<b>INSPECTION &amp; GAGING</b>		
		Balls .....	63	
		Plug Gage Sets.....	64-66	
		Plug Gages .....	65-67, 69-73	
		Ring Gages .....	71-72	
		Ring Gage Holders.....	72	
		Trilocks.....	68, 73	

VISIT [WWW.HSSBLANKS.COM](http://WWW.HSSBLANKS.COM) FOR COMPLETE CATALOG AND  
ADDITIONAL PRODUCT INFORMATION AND UPDATES

# WILLIAM T. HUTCHINSON CO.



**CALL TOLL FREE: 1-800-544-7934**  
**NO MINIMUM ORDER**



WILLIAM T. HUTCHINSON COMPANY  
453 LEHIGH AVENUE  
UNION, N. J. 07083-7926

1-800-544-7934  
(908) 688-0533  
FAX: (908) 688-8296  
[www.hssblanks.com](http://www.hssblanks.com)

ALL PRICES AND SPECIFICATIONS  
SUBJECT TO CHANGE WITHOUT  
NOTICE.

ALL PRICES ARE IN U.S. DOLLARS  
F.O.B. UNION, N.J.  
TERMS: NET 30 DAYS  
NO MINIMUM ORDER