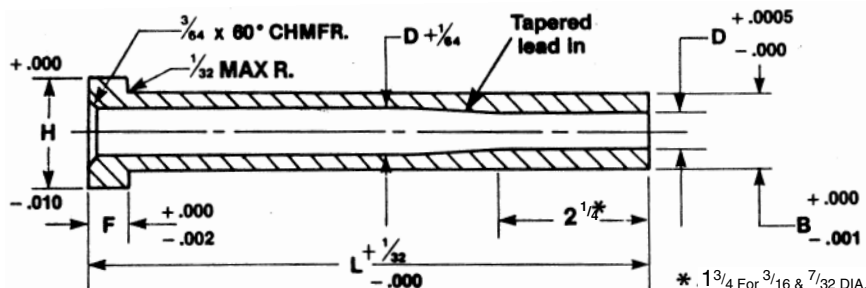


NITRIDED EJECTOR SLEEVES



Nitrided Ejector Sleeves are made of the finest grade of hot work die steel. The heads are hot-forged for strength. The outside surface is nitrided to a hardness of 64-74 Rockwell "C" and GROUND AFTER NITRIDING FOR STRAIGHTNESS AND FINISH. The bearing diameter is 300 Brinell and is finished, reamed and honed concentric with the O.D. of the sleeve.

B O.D.	D I.D.	H Head Dia.	F Head Thick.	List Price Each								
				L-4"	L-5"	L-6"	L-7"	L-8"	L-9"	L-10"	L-11"	L-12"
3/16	3/32	3/8	3/16	28.65	31.45	33.95	37.00	—	—	—	—	—
7/32	1/8	13.32	3/16	27.90	30.90	33.45	36.50	—	—	—	—	—
1/4	5/32	7/16	3/16	21.30	22.30	24.10	26.35	28.90	31.95	36.00	—	—
5/16	3/16	1/2	1/4	21.80	23.05	25.10	27.65	30.40	33.45	37.50	41.50	46.50
11/32	7/32	9/16	1/4	22.05	23.60	25.60	28.40	31.45	35.50	39.05	—	—
3/8	1/4	5/8	1/4	22.55	24.10	26.35	28.90	31.95	36.00	40.05	44.50	49.50
7/16	5/16	11/16	1/4	23.05	25.60	28.15	30.90	34.45	38.50	42.55	47.50	52.50
1/2	3/8	3/4	1/4	23.60	27.90	30.40	33.45	37.00	44.05	45.60	50.50	56.00
5/8	7/16	7/8	1/4	25.35	30.40	35.50	38.50	42.55	46.60	51.20	56.50	62.00
11/16	1/2	15/16	1/4	26.80	31.45	37.00	40.55	44.60	49.15	54.20	59.50	65.00
3/4	9/16	1	1/4	33.00	36.50	40.00	44.00	48.00	53.00	57.50	63.00	68.50
7/8	5/8	1 1/8	1/4	37.50	41.00	45.00	49.00	53.50	58.50	63.50	69.50	75.00
1"	3/4	1 1/4	1/4	41.50	45.50	49.50	54.00	58.50	64.00	69.50	75.00	81.50

OVERSIZE O.D. EJECTOR SLEEVES AVAILABLE

(+.005 over standard "B" dimension)

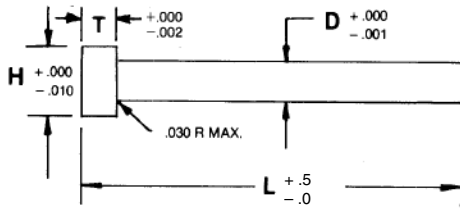
CALL FOR PRICING AND DELIVERY

WILLIAM T. HUTCHINSON CO.

TOLL FREE 1-800-544-7934 • 453 LEHIGH AVENUE • UNION, NEW JERSEY 07083-7926

EJECTOR PINS

NITRIDED EJECTOR PINS



- H13 Hot Work Die Steel
- Surface Hardness R/C 64-74
- Core Hardness R/C 35-40
- Forged and Annealed Heads
- Body Nitrided
- Honed Finish

STANDARD EJECTOR PINS

.005 OVERSIZE EJECTOR PINS

D Pin Dia.	H Head Dia.	T Head Thick.	Length			
			L-6"	L-10"	L-14"	L-18"
3/64	1/4	1/8	6.17	7.76	12.66	—
1/16	1/4	1/8	5.75	7.42	10.41	—
5/64	1/4	1/8	5.75	6.94	10.29	—
3/32	1/4	1/8	5.19	5.83	9.45	—
7/64	1/4	1/8	5.19	5.83	8.36	—
1/8	1/4	1/8	2.84	3.16	3.96	9.14
9/64	1/4	1/8	3.28	3.38	4.61	8.71
5/32	9/32	5/32	2.95	3.30	4.24	5.91
11/64	11/32	3/16	3.52	3.59	4.76	—
3/16	3/8	3/16	3.07	3.53	4.69	6.15
13/64	3/8	3/16	2.54	3.93	5.05	5.79
7/32	13/32	3/16	3.30	3.92	5.21	5.67
15/64	13/32	3/16	3.67	4.30	5.56	—
1/4	7/16	3/16	3.53	4.38	5.54	7.09
17/64	7/16	1/4	4.19	5.05	6.05	—
9/32	7/16	1/4	4.13	5.25	6.22	8.32
19/64	1/2	1/4	4.70	5.54	6.95	—
5/16	1/2	1/4	4.54	5.83	6.95	9.14
21/64	9/16	1/4	5.14	6.22	8.11	—
11/32	9/16	1/4	5.10	6.52	8.23	—
23/64	5/8	1/4	5.66	6.95	8.80	—
3/8	5/8	1/4	5.38	7.25	8.87	11.98
13/32	11/16	1/4	5.94	8.08	10.45	13.77
7/16	11/16	1/4	6.52	8.87	11.31	15.36
15/32	3/4	1/4	8.38	9.74	16.19	16.96
1/2	3/4	1/4	7.80	10.58	13.91	18.36
9/16	13/16	1/4	9.64	13.16	16.75	21.88
5/8	7/8	1/4	11.17	15.44	19.44	25.25
11/16	13/16	1/4	14.72	18.20	25.68	29.78
3/4	1"	1/4	15.58	20.91	26.63	34.07
7/8	1-1/8	1/4	34.09	40.10	68.12	96.21
1"	1-1/4	1/4	35.71	40.10	78.94	102.14

D .005 Over Std. Dia.	H Head Dia.	T Head Thick.	Length	
			L-10"	L-14"
3/64	1/4	1/8	8.65	—
1/16	1/4	1/8	8.65	—
5/64	1/4	1/8	8.65	—
3/32	1/4	1/8	7.59	—
7/64	1/4	1/8	7.59	4.22
1/8	1/4	1/8	6.14	4.22
9/64	1/4	1/8	3.83	—
5/32	9/32	5/32	6.19	4.69
11/64	11/32	3/16	4.07	—
3/16	3/8	3/16	6.62	5.01
13/64	3/8	3/16	4.39	—
7/32	13/32	3/16	6.42	—
15/64	13/32	3/16	4.78	—
1/4	7/16	3/16	6.47	6.14
17/64	7/16	1/4	5.38	—
9/32	7/16	1/4	6.86	—
19/64	1/2	1/4	5.94	—
5/16	1/2	1/4	6.90	7.74
21/64	9/16	1/4	6.73	—
11/32	9/16	1/4	7.03	—
23/64	5/8	1/4	7.52	—
3/8	5/8	1/4	8.46	9.72
13/32	11/16	1/4	9.22	—
7/16	11/16	1/4	10.06	12.00
15/32	3/4	1/4	11.07	—
1/2	3/4	1/4	11.07	14.33

ALSO AVAILABLE IN METRIC SIZES

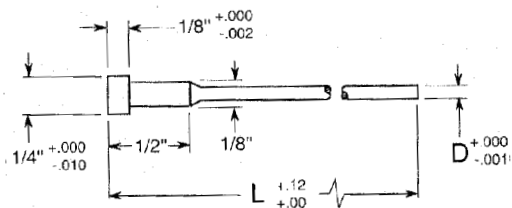
WILLIAM T. HUTCHINSON CO.

TOLL FREE 1-800-544-7934 • (908) 688-0533 • FAX (908) 688-8296 • ESTABLISHED 1927

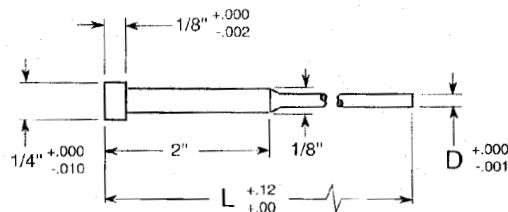
EJECTOR PINS

NITRIDED EJECTOR PINS — SHOULDER TYPE

Ejector pins are made from the best air hardening hot work die steel and heat treated for a tough core. The head is solid forged and annealed to prevent breakage. The body of the pin is nitrided to give a surface hardness of 64-74 Rockwell "C" then honed for a smooth friction free surface.



1/2" SHOULDER PINS



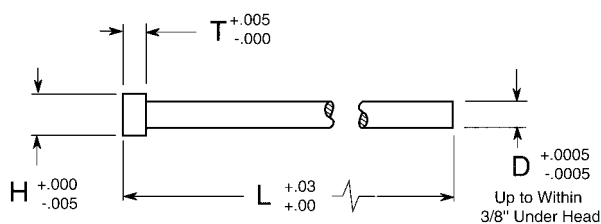
2" SHOULDER PINS

D Pin Dia.	LENGTH		
	6"	10"	14"
3/64	5.91	7.37	9.59
3/64 O.S.*	—	8.25	—
1/16	5.61	7.00	9.01
1/16 O.S.*	—	7.80	—
5/64	5.61	7.00	9.14
5/64 O.S.*	—	7.80	—
3/32	5.03	6.37	8.66
3/32 O.S.*	—	7.16	—
7/64	5.03	6.37	8.66
7/64 O.S.*	—	7.16	—

O.S.*
Pin Diameter is .005
over standard
diameter

D Pin Dia.	LENGTH		
	6"	10"	14"
3/64	5.76	6.63	9.28
3/64 O.S.*	—	7.95	—
1/16	5.55	6.68	8.27
1/16 O.S.*	—	7.48	9.20
5/64	5.55	6.68	8.69
5/64 O.S.*	—	7.48	9.20
3/32	4.80	6.02	8.33
3/32 O.S.*	—	6.83	8.69
7/64	4.80	6.02	8.15
7/64 O.S.*	—	7.03	8.69

ECONOMY EJECTOR PINS



- Oil Hardening Tool Steel
- Hardness R/C 58/60
- Heads Annealed R/C 42/45
- Ground O.D. ± .0005

BODY DIA (D)	HEAD DIA (H)	HEAD THICK (T)	PRICE EACH		
			4"	6"	10"
1/16	7/64	3/64	3.66	4.60	—
5/64	9/64	3/64	3.39	4.26	—
3/32	5/32	5/64	3.27	4.12	—
7/64	3/16	5/64	3.39	4.24	—
1/8	7/32	3/32	2.96	3.72	4.91
9/64	1/4	7/64	2.96	3.72	4.91
5/32	17/64	1/8	2.96	3.72	4.91
11/64	5/16	1/8	3.12	3.86	5.06
3/16	5/16	9/64	3.12	3.86	5.06
13/64	11/32	5/32	3.38	3.98	5.19

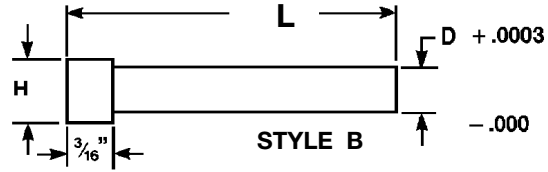
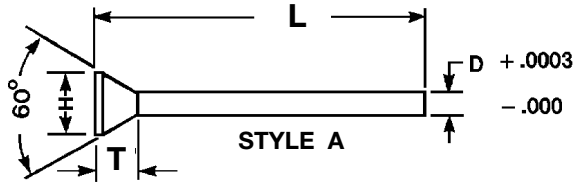
BODY DIA (D)	HEAD DIA (H)	HEAD THICK (T)	PRICE EACH		
			4"	6"	10"
7/32	3/8	5/32	3.62	4.24	5.46
15/64	13/32	11/64	3.72	4.49	5.62
1/4	7/16	3/16	3.72	4.49	5.62
17/64	7/16	1/4	4.36	4.73	5.73
9/32	7/16	1/4	4.36	4.73	5.73
19/64	1/2	1/4	4.60	4.86	5.99
5/16	1/2	1/4	4.60	4.86	5.99
21/64	9/16	1/4	4.76	5.13	6.72
11/32	9/16	1/4	4.76	5.13	6.72
23/64	5/8	1/4	4.86	5.38	7.28
3/8	5/8	1/4	4.86	5.38	7.28

WILLIAM T. HUTCHINSON CO.

TOLL FREE 1-800-544-7934 • 453 LEHIGH AVENUE • UNION, NEW JERSEY 07083-7926

HIGH SPEED STEEL PUNCHES

Hutchinson High Speed Steel Punches are manufactured from the finest quality AISI type M-2 high speed steel, heat treated and tempered to Rockwell C 60-62, then precision ground to uniform close tolerances.



Set-Up Charges (Shaded area only)

2 1/2" - 4" = 35.00

6" - 8" = 45.00

Dia. "D" Increment of .001	H	T	2 1/2"	3 1/2"	4"	6"	8"	10"	12"
.010 - .014	1/32	1/16	2" 4.85 5.83	7.76	10.44	—	—	—	—
.015 - .019	1/32	1/16	2" 4.00 4.85	6.68	9.68	—	—	—	—
.020 - .029	3/64	1/16	2" 3.23 3.91	5.83	8.83	—	—	—	—
.030 - .036	1/16	1/16	2.68	5.37	7.97	—	—	—	—
.037 - .046	5/64	1/16	2.68	5.37	7.37	13.49	22.17	—	—
.047 - .055	3/32	5/64	2.68	4.46	6.92	13.21	20.73	—	—
.056 - .064	7/64	5/64	3.58	4.58	7.04	12.87	22.45	—	—
.065 - .078	1/8	5/64	3.58	4.58	7.04	12.87	22.45	—	—
.079 - .087	9/64	3/32	3.58	4.58	7.04	12.87	20.72	—	—
.088 - .099	5/32	3/32	3.98	4.98	6.55	12.24	18.79	26.17	33.81
.100 - .120	11/64	3/32	3.98	4.98	6.55	12.24	18.79	26.17	33.81
.121 - .131	3/16	3/32	3.98	4.98	6.55	12.24	18.79	26.17	33.81
.132 - .147	13/64	3/32	4.25	5.25	6.79	11.48	17.50	24.46	31.45
.148 - .163	7/32	3/32	4.25	5.25	6.79	11.48	17.50	24.46	31.45
.164 - .179	15/64	3/32	4.25	5.25	6.79	11.48	17.50	24.46	31.45
.180 - .194	1/4	3/32	4.85	5.95	7.42	13.24	19.85	27.78	35.74
.195 - .210	17/64	3/32	4.85	5.95	7.42	13.24	19.85	27.78	35.74
.211 - .225	9/32	3/32	4.85	5.95	7.42	13.24	19.85	27.78	35.74
.226 - .241	19/64	3/32	5.73	6.76	8.22	14.22	21.15	29.62	38.13
.242 - .257	5/16	3/32	5.73	6.76	8.22	14.22	21.15	29.62	38.13
.258 - .272	21/64	3/16	5.73	6.76	8.22	14.22	21.15	29.62	38.13
.273 - .288	11/32	3/16	5.73	6.76	8.22	14.22	21.15	29.62	38.13
.289 - .304	23/64	3/16	6.64	8.37	9.27	16.85	23.75	33.27	42.68
.305 - .320	3/8	3/16	6.64	8.37	9.27	16.85	23.75	33.27	42.68
.321 - .336	25/64	3/16	6.64	8.37	9.27	16.85	23.75	33.27	42.68
.337 - .352	13/32	3/16	8.15	9.47	10.99	18.98	27.47	38.47	49.47
.353 - .368	27/64	3/16	8.15	9.47	10.99	18.98	27.47	38.47	49.47
.369 - .375	7/16	3/16	8.15	9.47	10.99	18.98	27.47	38.47	49.47
.376 - .436	D +.06 +.09	3/16	9.87	11.69	13.44	21.44	30.07	42.12	54.10
.437 - .484		3/16	11.21	13.86	15.73	23.91	32.64	45.68	58.74
.485 - .562		3/16	12.58	16.16	17.56	25.10	33.93	47.50	61.10
.563 - .625		3/16	14.29	18.96	20.59	28.20	37.02	51.95	66.65
.626 - 1.000			QUOTED ON REQUEST						

WHEN ORDERING, SPECIFY STYLE, DIA. AND LENGTH
SEE PAGE 39 FOR CONVENIENT QUOTATION REQUEST FORM
FOR SPECIAL STYLE A AND STYLE B PUNCHES

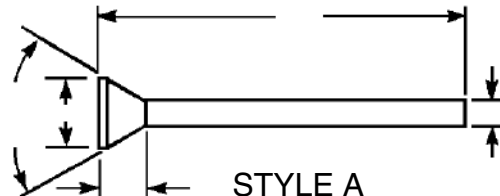
WILLIAM T. HUTCHINSON CO.

TOLL FREE 1-800-544-7934 • (908) 688-0533 • FAX (908) 688-8296 • ESTABLISHED 1927

STEEL PUNCHES

QUOTATION REQUEST FORM

For special Style A and Style B punches, copy and fax to: (908) 688-8296



MATERIAL

HARDNESS
R/C

QUANTITY

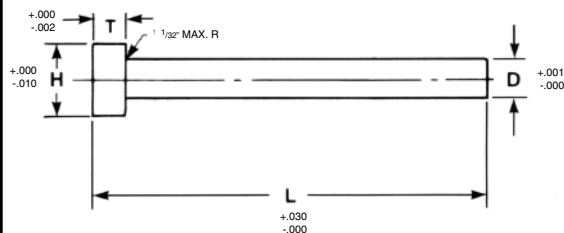
PLEASE INCLUDE ALL TOLERANCES AND CONCENTRICITY REQUIREMENTS

FROM: _____ PHONE: _____

COMPANY: _____ FAX: _____

CORE PINS

D PIN DIA	H HEAD DIA	T HEAD THICK.	STANDARD HARDNESS PRICE EACH			HIGH HARDNESS PRICE EACH		
			3"	6"	10"	3"	6"	10"
3/32	1/4	1/8	6.20	6.40	7.42	6.55	6.85	8.06
7/64	1/4	1/8	6.40	6.62	7.85	6.78	6.97	8.42
1/8	1/4	1/8	3.89	3.95	5.25	4.09	4.32	5.54
9/64	1/4	1/8	3.89	4.03	5.25	4.09	4.46	5.54
5/32	9/32	5/32	3.95	4.09	5.32	4.32	4.46	5.54
11/64	11/32	3/16	3.95	4.09	5.54	4.39	4.54	5.92
3/16	3/8	3/16	4.03	4.18	5.63	4.39	4.68	5.92
13/64	3/8	3/16	4.09	4.32	5.69	4.46	4.75	6.11
7/32	13/32	3/16	4.18	4.46	5.92	4.54	4.83	6.11
1/4	7/16	3/16	4.54	4.75	6.34	4.89	5.18	6.62
9/32	7/16	1/4	4.96	5.18	6.91	5.40	5.69	7.42
5/16	1/2	1/4	5.54	5.69	7.64	5.98	6.20	8.21
11/32	9/16	1/4	5.98	6.20	8.21	6.49	6.85	9.08
3/8	5/8	1/4	6.62	6.91	9.08	7.12	7.48	9.94
13/32	11/16	1/4	7.12	7.42	9.86	7.64	8.14	10.80
7/16	11/16	1/4	7.92	8.14	10.80	8.51	8.94	11.86
15/32	3/4	1/4	8.51	8.94	11.80	9.18	9.71	13.03
1/2	3/4	1/4	9.28	9.65	12.66	9.94	10.51	14.03
9/16	13/16	1/4	—	11.29	15.05	—	12.31	16.42
5/8	7/8	1/4	—	13.46	17.63	—	14.40	19.45
3/4	1"	1/4	—	18.35	24.19	—	19.86	26.63

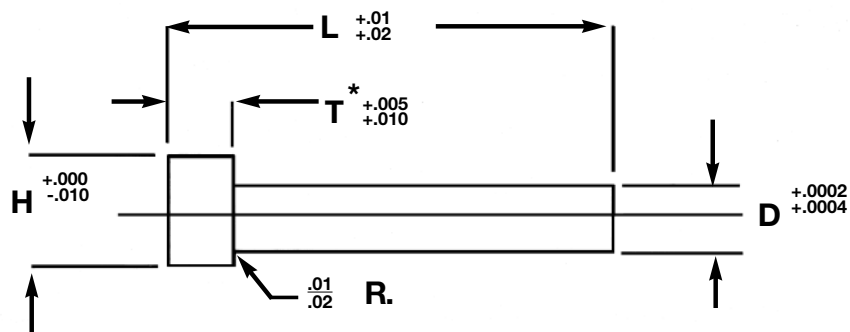


- Standard Hardness R/C 30 - 35
- High Hardness R/C 50 - 54
- Air Hardening Hot Work Die Steel
- Precision Ground After Heat Treating
- Heads Forged and Annealed

WILLIAM T. HUTCHINSON CO.

TOLL FREE 1-800-544-7934 • 453 LEHIGH AVENUE • UNION, NEW JERSEY 07083-7926

PUNCH BLANKS



*OPTIONAL T, A-2 AND M-2 ONLY

Body Diameter D	Diameter H	T *	L Length 1/4" Increments	Price				
				A-2	M-2	D-2	PM M-4	PM 10V
1/8	1/4	1/8 (3/16)	1 1/4 - 3	9.14	10.05	11.56	14.47	16.85
3/16	5/16	1/8 (3/16)	1 1/4 - 3 1/2	9.25	10.81	12.18	15.94	18.52
1/4	3/8	3/16 (1/8)	1 1/4 - 3 1/2	9.51	11.26	12.54	16.72	20.34
5/16	7/16	3/16 (1/8)	1 1/4 - 4	11.04	13.11	13.49	17.70	21.71
3/8	1/2	3/16 (1/8)	1 1/4 - 4	14.39	16.54	16.81	20.46	23.59
7/16	9/16	3/16	1 1/4 - 4	16.44	18.41	18.96	24.66	28.81
1/2	5/8	3/16	1 1/4 - 4	17.63	20.87	21.51	26.02	32.21
5/8	3/4	3/16 (1/4)	1 1/4 - 4	18.81	21.44	22.69	32.46	39.84
3/4	7/8	3/16 (1/4)	1 1/4 - 4	24.42	28.89	30.37	44.82	55.72
1	1 1/8	3/16 (1/4)	1 1/4 - 4	35.38	46.35	48.60	67.48	88.00

EXTRA LONG 6" AND 8"

Body Diameter D	Diameter H	Head Thickness T	Price			
			6"		8"	
			A-2	M-2	A-2	M-2
1/8	1/4	1/8	16.39	19.80	21.47	24.56
3/16	5/16	1/8	17.67	20.63	21.69	25.82
1/4	3/8	3/16	18.82	21.71	22.63	27.06
5/16	7/16	3/16	22.83	26.32	27.74	33.40
3/8	1/2	3/16	24.53	31.53	32.56	38.62
7/16	9/16	3/16	27.19	33.80	35.74	43.12
1/2	5/8	3/16	28.43	34.93	36.52	46.78
5/8	3/4	3/16	30.13	40.91	46.74	59.08
3/4	7/8	3/16	39.53	50.70	55.48	67.91
1"	1 1/8	3/16	61.89	81.08	84.46	107.85

M-2 R/C 60-62 D-2 R/C 61-63
 A-2 R/C 60-62 PM-M4 R/C 61-63
 PM-10V R/C 61-63

WILLIAM T. HUTCHINSON CO.

TOLL FREE 1-800-544-7934 • (908) 688-0533 • FAX (908) 688-8296 • ESTABLISHED 1927